



Airport Operations



Web-based Airport Management

powered by
DYNAMIC 
Components



Our Portfolio

With over 25 years of experience regarding airport and aviation business ISO offers a complete range of software solutions to support airports or ground handlers of any size.

The portfolio of ISO's software products covers all core business processes of airport management

- Airport Operations
 - SKYport AODB
 - SKYport Connect
 - SKYport Activities
 - SKYport Ressources
 - SKYport FIDS
- Aeronautical Charging and Billing
 - SKYport Billing
 - SKYport Billing with SAP®
 - SKYport IS-XML
- Collaborative Decision Making (CDM)
 - SKYport CDM
- Business Intelligence
 - SKYport Reporting
 - SKYport BI with SAP®
- Cargo
 - SKYport Cargo

Modularised applications support the core business processes and take care of real-time distribution and reception of all relevant information.

All products of the SKYport family have been designed using Dynamic Components, ISO's technological framework to develop scalable, browser based applications with highest performance.

Airport Operations

Accurate, real-time information is the key element of successful airport operations. Numerous parties are involved in running an airport, internal staff as well as business partners, airlines and authorities depend on this data to play their part in an airport's integrated business processes.

SKYport AODB

SKYport AODB is the central hub to store, process and distribute all flight related information. Based on an ORACLE database server SKYport ensures availability as well as integrity of all operational data and provides secure access to this data for all legitimate users.

All components of the SKYport AODB are equipped with tools to administer master data as well as operational data.

Intuitive, browser based GUIs, exceptional integration capabilities and easy adaption to customer specific demands make SKYport AODB the ideal and cost efficient tool for airports of all sizes.





Master Data Management

Reliable master data is the fundamental basis for efficient usage of software systems. SKYport AODB is equipped with a master data module that can be easily customized to reflect our customer's needs.

The master data module supports daily operations with reliable data for airlines, flights and airport facilities. All master data can be used to ease data entry using pull down menus or auto completers.

All entries of operational data are checked against the respective master data in order to guarantee a high standard of information quality.

Seasonal Flight Plan

The seasonal flight plan offers the first wide angle view on future airport capacity and resource allocation. SKYport AODB supports interactive creation of a seasonal flight plan or, using SKYport Connect offers interfaces to download and import your seasonal flight plan from regional flight plan coordinators.

Resource usage for gates and parking positions may be planned on a season basis. The automatic composition of rotations supports the precise planning of apron occupancy.

Multiple simultaneous seasons may reflect different planning states.

Daily Flight Plan

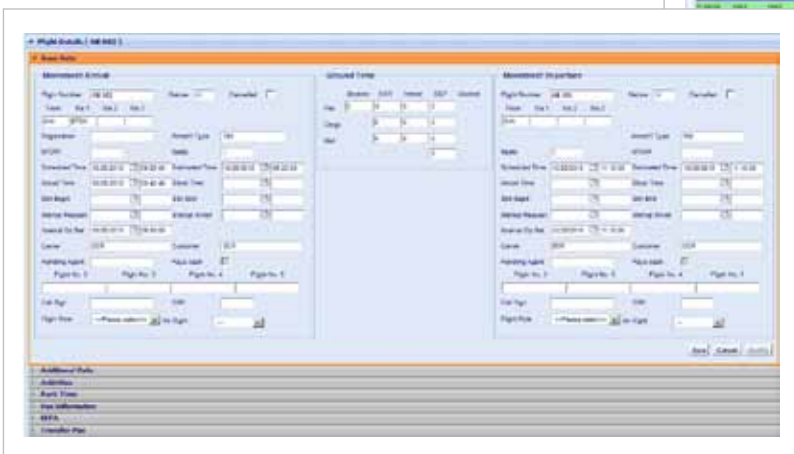
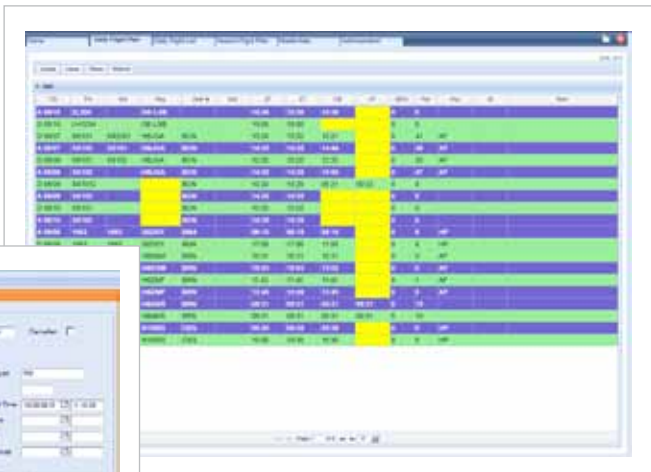
The daily operational flight plan is automatically generated from the seasonal flight plan and allows for the interactive administration of planned traffic as well as of general aviation flights.

The user interface of SKYport Daily Flight Plan presents information both in tabular and in detailed format. The table view may be easily configured according to the user's specific business processes. Of course simultaneous data entry from different workstations is fully supported.

SKYport provides the user with a multitude of input assistance tools like pull down menus, auto completers for master data references or time stamp entries by mouse clicks. The SKYport Daily Flight Plan supports both IATA and ICAO standards for data entries. All time entries may be fed and displayed in UTC or in local time.

The detail screens deliver insight into supplemental information like transfer passengers, travelers' final destinations or incoming IATA messages.

Configurable filters may be used for retrieval of both current and historical flight data.



User Management

SKYport AODB is equipped with an independent user management enabling you to set up user privileges for single users or user groups. This ensures efficient procedures for data distribution. Every user has access to the exact information needed to perform his duties.



SKYport AODB Add-ons SKYport Activities

Activities adds ground handling management functionality to the SKYport AODB standard.

Existing contracts with airlines can be used to define the mandatory and optional handling services per airline/flight/aircraft type.



Upon generation of the daily flight plan the SKport Activities rules engine will also generate a set of work orders outlining mandatory and optional activities per flight for the supervisor.

These work orders can either be printed or accessed via a web GUI using mobile devices i.e. rugged tablet or smartphone.

Optional work items can be signed by the captain or ramp agent providing a reliable statement of work.

The use of mobile devices has one major advantage, airports will get up to date information of the actual time needed to perform defined ground handling tasks making these available for billing or cost accounting purposes as the supervisor can easily create timestamps for start and end time of every activity.

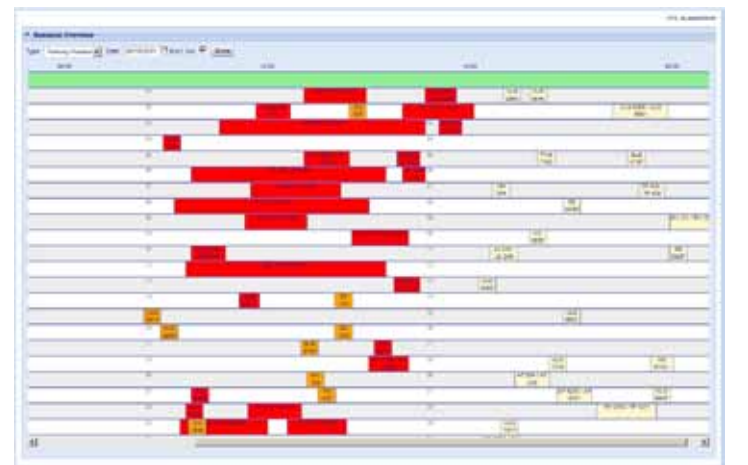
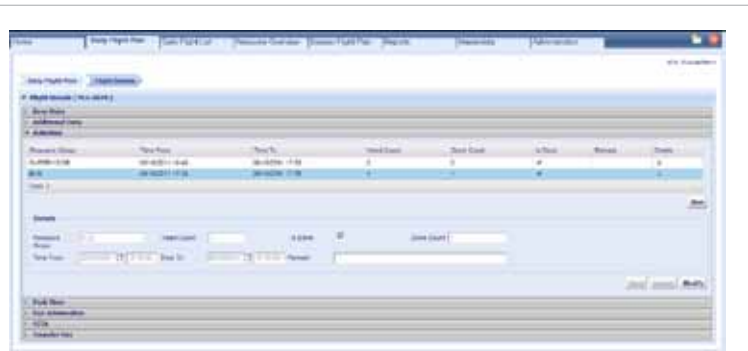
SKYport Resources

SKYport Resources adds resource management capabilities to your SKYport AODB offering easy administration of gates, parking positions, baggage belts and many more.

Resource preferences can be set for any flight and are displayed in a Diagram. During daily operations all resource allocations can easily be altered to any desired value using drag and drop.

Automatic conflict detection ensures that users can allocate only those resources that are suitable for a specific flight.

SKYport Resources is fully integrated into the SKYport AODB. All changes made in the resource allocation are stored directly to the AODB and data is available for all users in real time.





SKYport Connect

SKYport Connect, the integration suite of the SKYport AODB, guarantees real-time data exchange to and from external systems covering multiple protocols and data formats. SKYport Connect allows for rapid integration of new interfaces and processing rules.

SKYport Connect supports more than hundred interfaces to third party systems of airport operators, to business partners or public information platforms.

Available data exchange procedures include airport specific standard interfaces as well as individually customizable interfaces for local requirements.

SKYport Connect Examples

- SITA Messages
Send, receive and process standardized IATA message formats via SITATEX. Supported message types include MVT, LDM, PTM as well as FFM, FSU, SAM/SRM and many others.
- Coordinated Flight Plans
Initialize seasonal flight plans and import daily updates from regional coordinators.
- ATC Tower Systems
Communication with local Air Traffic Control on the basis of ADEX-P or AFTN.
- Provide real time data for 3rd party systems i.e.:
- Flight Information Display Systems
- Gate Access Verification
- and many others

SKYport FIDS

With SKYport FIDS the SKYport AODB gains functionality to supply flight information to the public.

SKYport FIDS is a web based Flight Information Display System for arrival/departure displays, check-in counters, gates and baggage reclaim belts and other information boards.

As the SKYport FIDS is directly integrated to the SKYport AODB all data is displayed in real time.

SKYport FIDS being fully HTML-based it may be applied for any display equipment with browser support. Individual configuration is made easy by standard tools like CSS.

Airline	Flug	Herkunft	Zeit	Erw.	Status
SKYMARK	SK0118	Palma de Mallorca	11:05	11:43	Delayed
SKYMARK	SK0401	Ripa Futicchio	14:05		
helvetic	ZL7943	KZB	15:10		Charter Flight
SKYMARK	SK0108	Hamburg	16:30		
SKYMARK	SK0102	Barcelona	16:35		
Condor	CR1425	München	17:10		
AIRFRANCE	AF1236	Paris City	18:00		

Departures						
Flug/ Flight	Von/ From	Planmäßig/ Scheduled	Erwartet/ Expected	Status	Schalter/ Counter	
FR8552	Palma de Mallorca	18:10	18:10		C2-C3	
FR4599	Porto	21:20	21:20		C4-C5	
Nächster Tag / Next Day						
FR2542	Malaga	09:40	09:40		C2-C2	
FR9722	Stockholm/Skavsta	09:45	09:45		C3-C3	
FR6523	Edinburgh	14:15	14:15		C3-C4	
FR2405	London/Stansted	14:55	14:55		C5-C5	
FR2415	Barcelona/Reus	15:50	15:50		C1-C2	
HG3234	Palma de Mallorca	16:15	16:15		C10-C11	
FR2413	Dublin	16:45	16:45		C2-C3	
WJU6104	Kiew/Zhuliany	20:30	20:30		C7-C8	
FR7085	Rom/Ciampino	20:35	20:35		C2-C3	
FR9554	Barcelona/Girona	21:30	21:30		C4-C4	



Quality Features

- High reliability and performance by using industry standards
- Easy-to-use graphical user interfaces
- High level of data security and validation
- Outstanding integration abilities
- Easy adaptation to customer specific requirements by multiple levels of customizing
- All necessary implementation and maintenance services are offered by ISO Software Systeme. We care for your needs.

Services and Project Management

The decisive factor for a successful cooperation is based on an effective project management. Hence, ISO offers all services for the implementation of its solutions based upon its proven project management methods. All processes are under control of our certified quality management. The services provided include

- Business process analysis
- Requirement analysis
- Installation and integration
- Customizing services
- Training
- Support
- Software maintenance
- Change management

Through a web-based ticket and task management system, the users may participate directly in a transparent communication process.

Technology

All products of the SKYport family were developed using Dynamic Components; ISO's framework to engineer and deploy scalable, high performance applications to various industries.

The entire production process is based on a model-and test-driven approach. A major focus was set to create a base for high-performance, scalable, robust and fail-safe products. Basic technology for Dynamic Components is Java 2 Platform, Enterprise Edition (J2EE).

SKYport relies on LINUX and Oracle industry standards. All GUIs are browser based and don't require any additional installation on the client computers.

As Oracle certified partner ISO may provide Oracle database products and all related professional services on demand.

SKYport is fully J2EE compliant and runs with JBoss as recommended application server. Other compliant application servers like IBM WebSphere or SAP NetWeaver can be implemented on request.



Customization

SKYport has been developed with changing requirements in mind. All applications can be customized to your needs using XML and CSS. All user interfaces are multi-lingual.

The multiple customizing options include

- Screen layouts
- Input validation
- Output formats
- FIDS design



References

More than 40 reputable airports and Handling Agents worldwide rely on solutions by ISO Software Systeme, among them

- Zürich Airport, Switzerland
- Aeroporti Di Milano, Italy
- Copenhagen Airport, Denmark
- Bangkok Suvarnabhumi Airport, Thailand
- Indira Gandhi Airport Delhi, India
- Berlin International Airports Germany
- London Gatwick Airport, UK
- Changi Airport, Singapore
- Salzburg Airport, Austria
- Nuremberg Airport, Germany
- Stuttgart Airport, Germany
- Namibian Airports Company
- GlobeGround Berlin, Germany
- Jet Aviation International, U.S.A

The Company

The ISO Group has been operating successfully on the market for 30 years now and has established a solid reputation as a major player in IT-consulting, software development, and related IT-services. Stability in corporate management and continuous, healthy growth have become our trademarks.

Today we support a base of notable customers worldwide from international locations. Our global activities are not just restricted to Europe - we're also targeting South East Asia, the Middle East and North and South America, which are poised to be the treasure troves of the future.

As major member of the group, ISO Software Systeme has been a reliable partner for numerous airports for many years in the areas of air traffic management, airport management and SAP® implementations. ISO maintains a quality management system which is certified according to DIN EN ISO 9001. As a software partner of SAP AG, ISO has a strong consulting team with excellent skills and experiences.

Other business areas of ISO Group include software solutions for the tourism industry, airline passenger revenue accounting, data quality management and electronic content management (ECM) as well as hosting services and managed services.





Contact

ISO Software Systeme GmbH

Eichendorffstrasse 33

90491 Nuremberg / Germany

Phone +49 911 - 99 594-0

Fax +49 911 - 99 594-129

info@iso-gruppe.com

www.iso-gruppe.com

All rights reserved. SAP and all SAP products mentioned in the text as well as the respective logos and trademarks or registered trademarks of SAP AG in Germany and other countries. All details are without guarantee.

SAP® Certified
Integration

ORACLE® CERTIFIED
PARTNER

Microsoft
GOLD CERTIFIED
Partner

Advanced Infrastructure Solutions
Networking Infrastructure Solutions
Mobility Solutions



Strategic
Partner